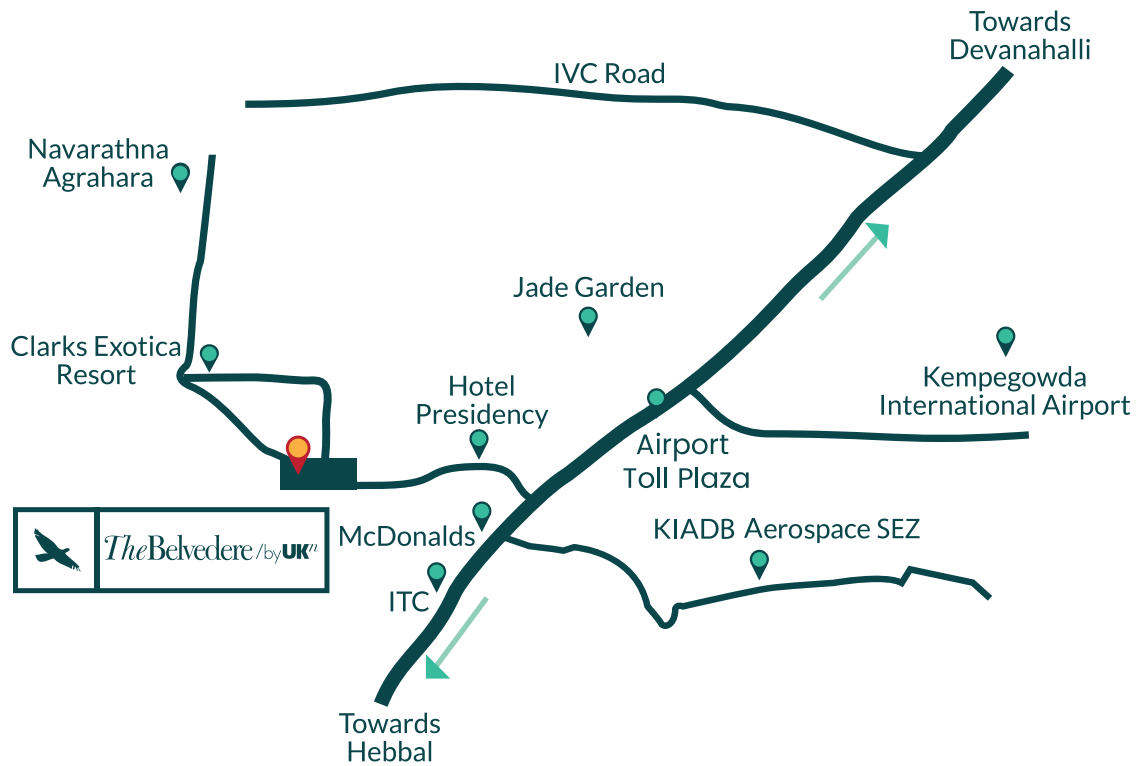




The  
Belvedere<sup>(n)</sup>  
by **UK**<sup>n</sup>  
Airport District

*make this your home...*

# LOCATION



- 20 mins from Hebbal
- 2 mins before the Airport Toll Plaza
- Excellent Cross-Ventilation
- 3 Acres of Central Park
- Spacious, Dine-out Balconies
- Exclusive Leisure Zone









---

*The Belvedere by Ukn Airport District combines the best of design, location and pricing to get you the most prime property North Bangalore has to offer.*

*Spread across 9.1 acres and visualised with a focus on aesthetics, public spaces and well-designed homes, The Belvedere by UKn, Airport District comprises of 843 units.*

*The phase-1 tower comprises of 1 bedroom, 2 bedroom, 3 bedroom totaling 419 affordable luxury apartments.*

*Strategically, located near the airport, it brings the luxuries of community living to home-owners and investors alike.*

**COME MAKE THIS YOUR HOME!**

*The*  
**Belvedere**<sup>(TM)</sup>  
by **UKn**  
Airport District



## INDEX

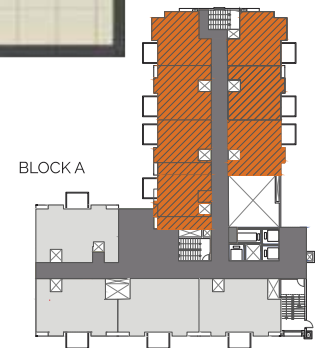
- |                  |                     |
|------------------|---------------------|
| ① Entry          | ⑥ Cricket Net       |
| ② Exit           | ⑦ Tennis Court      |
| ③ Swimming Pool  | ⑧ Jogging Track     |
| ④ Kids Play Area | ⑨ Landscape Garden  |
| ⑤ Amphitheatre   | Ⓑ Club House (G+10) |

  
 by **UK<sup>n</sup>**  
 Airport District

## SITE MAP

\*Sitemap & Index are for illustration purpose and the actual sizes will be as per architects final drawing

# FLOOR PLAN



1 Bedroom



| Super Built-up Area | Carpet Area | Balcony |
|---------------------|-------------|---------|
| 660 Sft.            | 469 Sft.    | 53 Sft. |

\*Floor Plans are for illustration purpose and the actual dimensions will be as per architects final drawing

# FLOOR PLAN



2 Bedrooms



Super  
Built-up Area

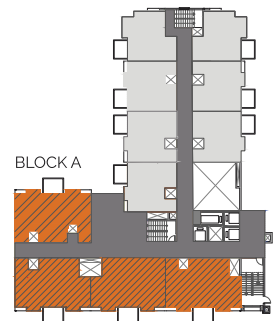
930 Sft.

Carpent Area

672 Sft.

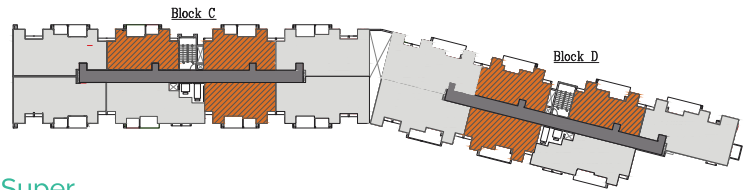
Balcony

64 Sft.



\*Floor Plans are for illustration purpose and the actual dimensions will be as per architects final drawing

# FLOOR PLAN



2 Bedrooms

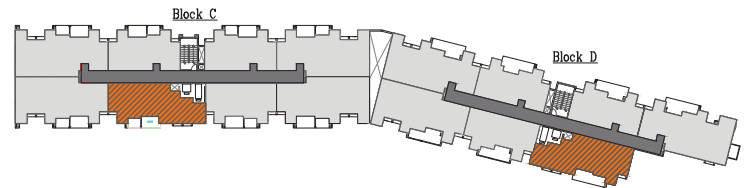


| Super Built-up Area | Carpet Area | Balcony |
|---------------------|-------------|---------|
| 1030 Sft.           | 712 Sft.    | 61 Sft. |

\*Floor Plans are for illustration purpose and the actual dimensions will be as per architects final drawing



# FLOOR PLAN



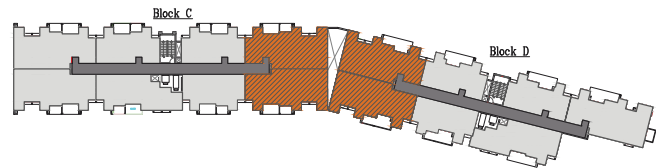
3 Bedrooms



| Super Built-up Area | Carpet Area | Balcony |
|---------------------|-------------|---------|
| 1275 Sft.           | 887 Sft.    | 57 Sft. |

\*Floor Plans are for illustration purpose and the actual dimensions will be as per architects final drawing

# FLOOR PLAN



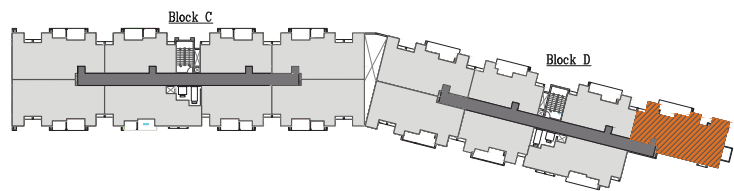
3 Bedrooms



| Super Built-up Area | Carpet Area | Balcony |
|---------------------|-------------|---------|
| 1460 Sft.           | 1045 Sft.   | 61 Sft. |

\*Floor Plans are for illustration purpose and the actual dimensions will be as per architects final drawing

# FLOOR PLAN



 3 Bedrooms



| Super Built-up Area | Carpet Area | Balcony |
|---------------------|-------------|---------|
| 1535 Sft.           | 1049 Sft.   | 96 Sft. |

\*Floor Plans are for illustration purpose and the actual dimensions will be as per architects final drawing



## MODEL APARTMENT @ A GLANCE



Pictures shot at the location

# MODEL APARTMENT @ A GLANCE



Pictures shot at the location

# SPECIFICATION



## STRUCTURE

RCC framed structure with

- External & Internal walls of solid concrete blocks
- External wall with cement plaster and paint

## FLOORING

- Entry/Foyer/Living/dining/Kitchen-Vitrified
- Vitro Ceramic tiles Bedroom - Vitrified
- Vitro Ceramic tiles
- Balcony- Ceramic Terracotta tiles

## LOBBY & STAIR CASE

- Granite/ Kota or natural stone with Vitrified or Ceramic tiles

## LIFTS

- Lifts of suitable capacity in each block

## EXTERNAL DOORS AND WINDOWS

- Wooden frames and Flush Doors
- Aluminium powder coated windows with Glazing

## KITCHEN

- Ceramic tiles dado of 2 feet above granite counter (Granite counter @ extra cost)

## TOILETS

- Flooring - Anti-Skid Ceramic tiles
- Dado - Ceramic tiles
- Wash Basin - ISI Mark CP fitting
- Counter - Granite/Marble or Natural stone W/C

## WALL FINISHES

- Internal walls: Oil bounded distemper for all plastered walls and ceilings
- External walls: Cement plaster & paint for the exteriors and common areas



## **ELECTRICAL**

- In concealed conduits with copper wires and suitable points for power and lighting
  - Provision for split A/Cs in the living and Master Bedroom.
  - Television/Telephone /DTH points in Living Room and Mater bedroom.
- 

## **BACK UP POWER**

- Generator for all common services.
- Back up power for the apartments as follow:
  - 2 Bedroom Apartments - 1kw
  - 3 Bedroom Apartments - 2kw



# AMENITIES



## SPORTS



*Squash • Tennis • Cricket Net*  
*Badminton • Swimming Pool*  
*Basketball*

## REJUVENATE



*Space for Salon • Lounge • Library*  
*Movie Room • Space for Cafe • Gaming*  
*Amphitheatre*

## ESSENTIALS



*Gym • Space for ATM • Space for Convenience Store*  
*Kids Play Area • Jogging Track • Space for Clinic*  
*Garden & Lawns*

# SIGNATURE PROJECTS



## RESIDENTIAL



Miraya Rose By **UK**<sup>®</sup>  
Whitefield



Esperanza By **UK**<sup>®</sup>  
Whitefield



Belvista By **UK**<sup>®</sup>  
Whitefield



Interlaken By **UK**<sup>®</sup>  
Outer Ring Road



Miraya Grant By **UK**<sup>®</sup>  
Vittal Mallya Road



Miraya Residences By **UK**<sup>®</sup>  
Whitefield

## COMMERCIAL



Garden of Eden  
By **UK**<sup>®</sup>  
Whitefield



High Street@Miraya Rose  
By **UK**<sup>®</sup>  
Whitefield



Midpoint  
By **UK**<sup>®</sup>  
Maddur





---

## UKn Properties Pvt.Ltd.

10th floor, Gamma Block, Sigma Soft Tech Park  
7 - Whitefield, Varthur Main Road,  
Bangalore - 560 066.

Website: [www.ukn.co.in](http://www.ukn.co.in)

 [sales@ukn.co.in](mailto:sales@ukn.co.in), |  +91 7676 555 666

